



The M Thrill.

The most powerful letter in the world –
a distinctive symbol of an
exceptional philosophy in motoring.





The letter M is BMW's pledge to supreme performance in technology and on the road.

Focusing carefully on a whole range of innovative ideas and developments, BMW M GmbH creates that typical M mobility which thrills so many customers so consistently day-by-day. Supreme competence in technology has made the letter M the synonym for high performance in the BMW range.

Contents

BMW M3 power unit
pages 4-7

BMW M3 coupé
pages 8-11

BMW M3 convertible
pages 12-15

Sequential M Gearbox
pages 16-17

BMW M3 suspension,
BMW M3 brakes
pages 18-19

BMW M roadster
pages 20-23

BMW M coupé
pages 24-25

BMW M5
pages 26-27

BMW Individual
pages 28-29

BMW Driver Training
pages 30-31

BMW Technology Guide
pages 32-35

Specifications
pages 36-37

Standard equipment
pages 38-40

Special equipment
page 41

Colour card
pages 42-44

BMW Financial Services,
BMW Service
page 45

A power unit that simply looks fast even at a standstill will make your pulse beat faster before you even start moving.

The reason, quite simply, is that the power unit of the BMW M3 is an exciting product of high technology in its features and looks. The only thing you do not see at first sight is its superior efficiency.



Displacing an ample 3.2 litres, the power unit of the BMW M3 offers supreme performance throughout the entire speed range, leaving nothing to be desired even long before it reaches its peak torque.

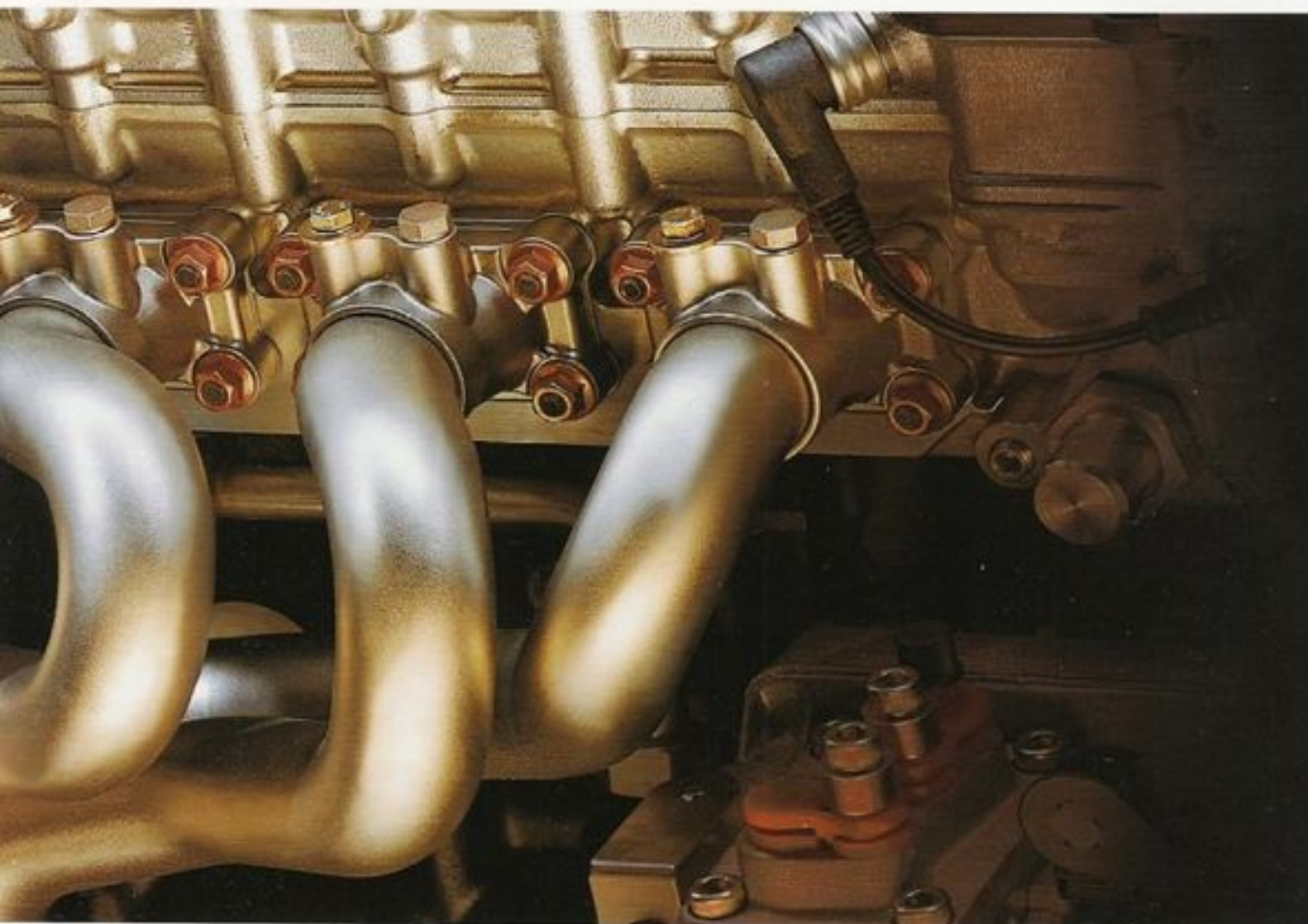
Double variable camshaft control maintains torque at a minimum of 340 Nm or 250 lb-ft all the way from 2600 to 6200 rpm, with torque peaking at an even more impressive 350 Nm or 258 lb-ft. The

result of these outstanding figures is of course equally outstanding flexibility and supreme performance reserves making dynamic acceleration a simple exercise even from very low engine

speeds. And a further forte of the M3 power unit is superior fuel economy on the road. From the start, therefore, this high-performance engine shows you clearly what the engineers at BMW M GmbH

BMW M Power

Double variable camshaft control (double-VANOS) in the power unit of the BMW M3 ensures superior torque at low and medium speeds, enhances running smoothness particularly when idling, and minimises exhaust emissions.



mean by supreme performance. Not just maximum output of 236 kW or 321 bhp at 7400 rpm, but rather fantastic spontaneity in the engine's response to the accelerator. Agility also resulting from the

ample supply of air to the combustion chambers through four valves per cylinder and six individual throttle butterflies. With its capacity of 20 million instructions per second (!), the engine man-

agement developed especially by BMW M GmbH also makes a significant contribution to this performance truly outstanding in every respect.

BMW writes the word Muscle with a big M.

And you can rest assured that the immense muscle of the BMW M3 power unit, plus the perfectly matched suspension, will give you two more big M's: Magnificent Motoring.





Forget everything you have so far considered typical of a sports car. And allow the BMW M3 coupé to enter your world, leaving even your wildest expectations far behind. Because the M3 coupé has everything it takes

to make it a genuine sports car of the type that could only come from BMW M GmbH. Outstanding suspension and an unbelievably powerful 3.2-litre six-cylinder. A crisp and precise six-speed manual gearbox with ultra-short

gear travel converting the 236 kW/321 bhp of the BMW M3 power unit into dynamic performance of a new kind, the M3 coupé accelerating to 100 km/h in 5.5 seconds. And to provide the right kind of safety to match, the fading-

free high-performance brake system with compound discs ensures short stopping distances even under extreme conditions.

Perhaps the best way to express intelligent technology is through modesty.

Which is why we build the BMW M3 coupé for people who wish to feel performance without bragging about it.



The BMW M3 coupé: Only the connoisseur knows what hides within the elegant body. A sports car offering far more than supreme performance, since two particularly significant features of the

BMW M3 coupé are its comfort and everyday driving qualities. Tailored carefully to the output of the engine, the M suspension allows the kind of lateral acceleration otherwise to be found only in motor-

sport. It significantly enhances the car's safety reserves, ensuring superior safety not only in bends, but also on fast, straight-line roads thanks to the car's efficient ground effect. M-style streamlining

with a front air dam, clearly contoured side-sills and the rear end with its integrated diffuser ensure a low drag coefficient plus extra downforces at high speeds. So that the driver of the BMW

Streamlining as an all-embracing work of art: Wherever air drag might slow down the car, BMW M3-specific streamlining and design features reduce drag forces to a minimum and increase the ground effect to a maximum.



M3 coupé will experience one asset in particular: supreme performance as an overall, all-inclusive concept.

In their own unique design,
the BMW M3 instruments are
exactly where they should be.



This sports coupé gives you
all the amenities you want
from A - Z. Four full-sized
seats and space more than
generous for a sports car of

this calibre are natural assets
meeting all your practical re-
quirements. The ergonomi-
cally designed cockpit of the
BMW M3 is virtually custom-

built for the driver to ensure
supreme motoring pleasure
at all times.

Can you think of another sports car with ample space also at the rear? The BMW M3 coupé offers precisely this roominess, pampering your passengers with comfort and luxury wherever you go.



Specially contoured sports seats are available exclusively in the BMW M3 coupé. Headrests and shoulder supports adjustable for height as well

as thigh supports variable in length offer excellent lateral support in your seat even when driving fast and dynamically on winding roads.

Can you imagine a more thrilling way to experience the great outdoors?
Try out the BMW M3 convertible for a unique blend of supreme performance and open-air motoring.



With unlimited headroom and bright sunshine added to the performance and power of the BMW M3, driving in the open becomes a particularly thrilling, quite unparalleled experience. And remember that with its very special performance

features, the M3's top-of-the-range power unit is ideal both for brisk and dynamic cruising through the most beautiful countryside and for high-speed travelling on the motorway. Precisely this makes driving the BMW M3 convert-

ible with the roof down an absolutely unique experience offering you the best of both worlds: the performance of a thoroughbred sports car and the thrill of motoring with nothing but the sky above. And it is only obvious that

you can rely in full on the high safety standard offered by your BMW M3 convertible, featuring all the benefits of BMW's F.I.R.S.T. (Fully Integrated Road Safety Technology) safety concept, where all safety-relevant systems and

Like all other components, the soft roof meets the highest standards. Consisting of no less than three strong layers, it efficiently insulates the

interior against noise and cold weather. And it opens and closes fully automatically at the touch of a button.

Available as an option, the light-alloy hardtop with its heated rear window adds the final touch, creating a particularly distinctive, stylish look.



components interact with one another – one of these components on the BMW 3 Series convertible being the extra-strong windscreen frame. The bodywork itself offers supreme torsional stability, meets all demands in

terms of additional side-impact protection, and thus ensures a standard of stability and safety quite unique for an open car. It almost goes without saying that both BMW M3 models offer the utmost in active and pas-

sive safety. As an example, they both come as standard with side airbags for both the driver and front passenger.

The cockpit of the BMW M3 convertible again provides that ergonomic design so typical of BMW. After all, we want you to feel really at home also in a sports car of this calibre, with all the important instruments right there in front of you.



The BMW M3 convertible pampers you with everything you would expect of an automobile of this class - the freedom of a convertible, the performance of a thoroughbred sports

engine, and - by no means natural in a convertible of this calibre - ample space for four. In all, therefore, driving pleasure only the BMW M3 convertible is able to offer.

The rollover safety system available as an option comes up within fractions of a second whenever required.



Now shift gears even faster with a brand-new concept straight from motorsport:
The Sequential M Gearbox allows you to shift gears in 0.4 seconds without even touching a clutch pedal.



BMW M GmbH now offers you a very special highlight of motorsport technology refined particularly for the BMW M3: Available as an option, the Sequential M Gearbox (SMG) changes gears within a split-

second. All the driver has to do is move the selector lever briefly to the rear (to shift up) or to the front (to shift down). The clutch is disengaged and engaged by a hydraulic control system, without even

requiring a clutch pedal. Conveying the power of the engine to the rear wheels just as efficiently as a conventional manual gearbox, SMG maintains all the dynamic performance and spontaneity of a

regular manual transmission. It reliably avoids mistakes in shifting gears, so that there is no risk of over-revving the engine and no risk of a sudden load change when shifting down. Which means that

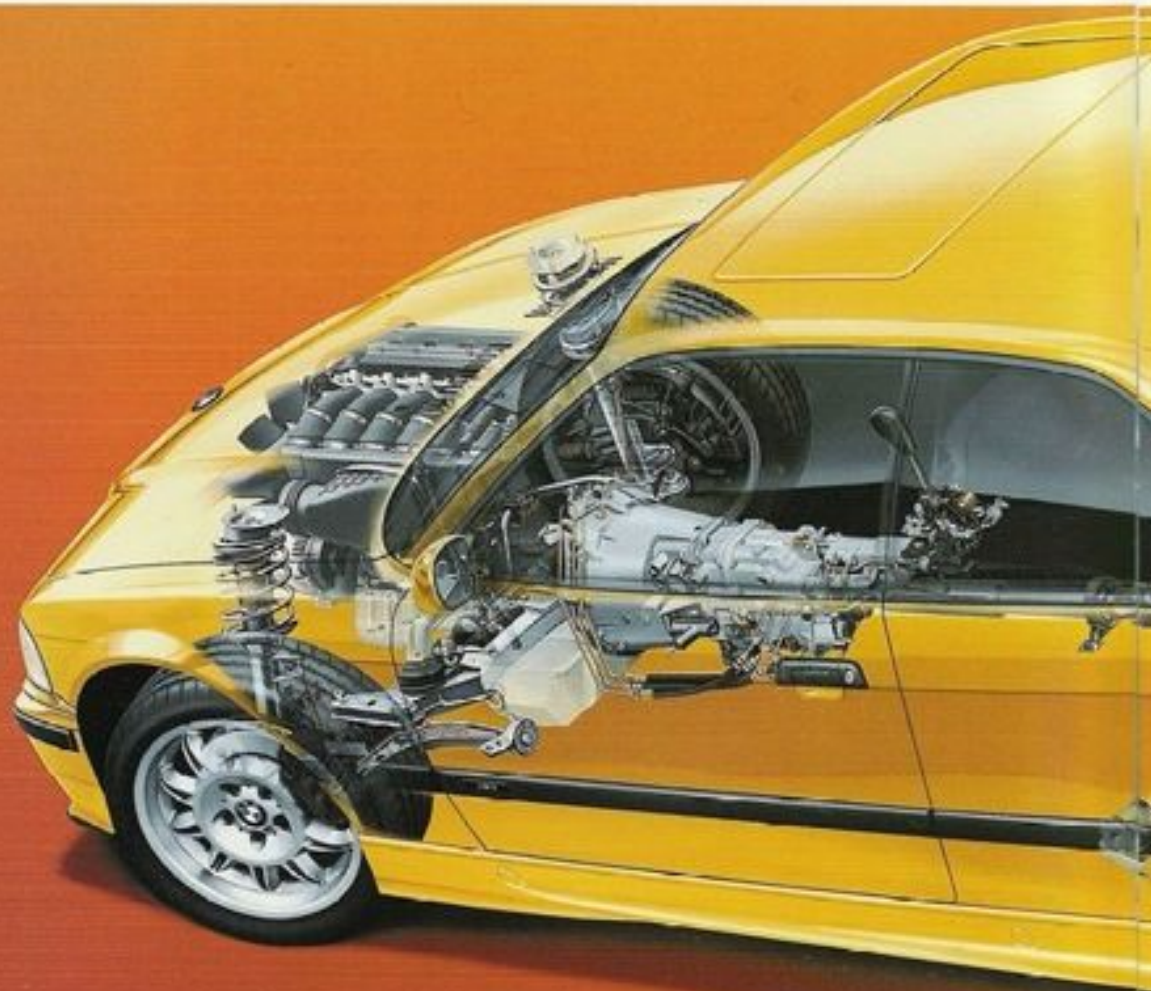
The six-speed manual gearbox fitted as standard shifts gears with maximum precision. And with their well spaced-out increments, the six gears give you all the power of the engine at all times.



the driver can concentrate in full on actually driving the car. In all, therefore, SMG offers an even faster gearshift, extra comfort, and superior safety. And if you want it to, the Sequential M Gearbox will

even shift gears by itself. For example in city traffic.

From 100 to 0 in barely 3 seconds.
The brakes of the BMW M3 make the longest seconds extremely short.



Performance is one thing. Getting it safely on to the road is another. BMW's legendary M suspension has proven its merits on the most demanding test tracks, the

heart of the M3's suspension being formed by BMW's patented centrally guided rear axle. In conjunction with the spring strut front axle, this guarantees thrilling behav-

our in bends and exceptional steering precision even under extreme conditions. The high-performance brakes, in turn, provide approximately 11.0 m/sec² brake power on

The BMW M3 light-alloy wheels keep the tyres reliably on the rim even with a loss in pressure, the M3 remaining on course and the driver maintaining full control.



And with its high-performance brake system featuring compound discs in floating arrangement on the front axle, the BMW M3 sets the standard also in brake efficiency.



Ideal road surfaces, enabling the BMW M3 to come to a standstill from 100 km/h in just about 3 seconds or after approximately 35 metres.

Driving a roadster is passion.
Driving the BMW M roadster is mind-boggling.
Asking about the reason for this car
is like asking about the reason for life.
So just enjoy the very best as it is.



The BMW M roadster is the ultimate sports car with enormous power reserves, a power-to-weight ratio of 8.2 kg/bhp providing breathtaking acceleration at all speeds and in all situations. The source of

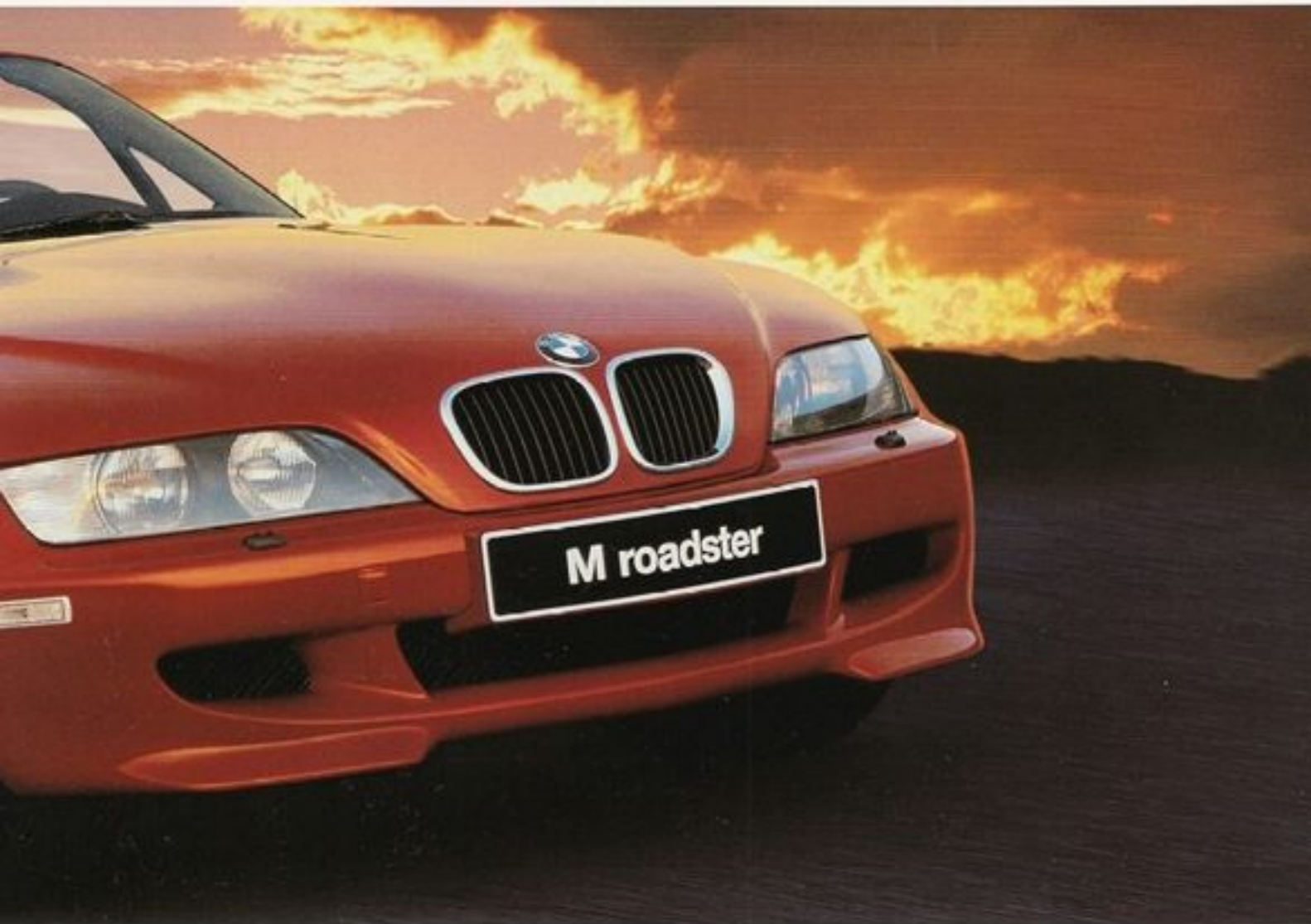
this truly outstanding thrust is BMW's top-of-the-range engine technology well known to the connoisseur as M Power. And with the 3.2-litre six-cylinder offering performance at its best, the car's

handling is just as exceptional. Suffice it to say, therefore, that the unique combination of the Z3 body and the BMW M3 power unit opens up a new dimension in dynamic motoring, the BMW M roadster

The side inlets with chrome trimming bear testimony to the legendary BMW 507, one of the greatest automobile classics of all time.

The BMW M roadster is not only powerful, it also shows its muscle. Flared wheel arches, four tailpipes, and 225/45 ZR 17

tyres at the front combined with 245/40 ZR 17 tyres at the rear are clear signs of unparalleled performance.



responding quickly and accurately to your commands, ensuring a level of performance impossible to describe in words. The suspension with its 17-inch light-alloy wheels is firm but not hard. Which, at

the end of the day, means that driving the BMW M roadster is an experience you will never forget.



Just one look into the interior of the BMW M roadster will make your heart beat faster, the unique passenger compartment with leather upholstery in extravagant colours arousing all your emotions.

You will be thrilled immediately by the classic looks of a purebred roadster with features typical of a sports car cockpit – for example clear, easy-to-read instruments in chrome rings and the sport-



Additional instruments on the centre console with chrome rings add a further striking touch, analogue faces offering helpful information such as the time of day, oil temperature, and the outside temperature.



ing BMW M leather steering wheel in three-spoke design with its integrated full-sized airbag. Benefitting from features of this kind, you can keep the supreme power of the BMW M roadster under

control safely and smoothly in every situation. Which makes every mile on the road a genuine thrill in dynamic motoring.

**A sports car of the very special kind.
The BMW M coupé. Uncompromising power,
uncompromising design.**



The two-seater BMW M coupé is a thoroughbred sports car built for one asset in particular: driving pleasure from the start. With its extra-low seats, it reduces your ground clearance above the road to a minimum. Within the long, stretched-

out engine compartment lies the 3.2-litre M machine with exactly the right muscle for this dynamic coupé. With maximum torque of 350 Newton metres or 258 lb-ft at just 3250 rpm. Which means maximum power and performance

whenever you want it. And that means acceleration absolutely sensational in every respect - from 0 to 100 km/h in 5.4 seconds. To make sure that you still have the right kind of driving stability despite all this power, the M coupé comes

The unique contours of the BMW M coupé result in particular from the powerful rear end with its wide tail lights and four awe-inspiring exhaust pipes. Attractive styling features such as the oval rear-view mirrors and side intakes then round off the car's unmistakable design.



with a bodysell uniquely stiff for a car in this segment. So that every driving manoeuvre remains absolutely smooth and secure, without the slightest distortion of the body. The BMW M coupé: designed to be different, built to be unique.

**There are thoroughbred sports cars.
And luxurious saloons.
But only one car gives you the best
of both worlds.
The BMW M5 saloon.**



A thoroughbred sports car and a luxurious saloon all in one. With the new BMW M5 this is not a contradiction in terms. It is reality. Because the BMW M5 is a high-performance car of the highest calibre. With the focus not

just on the engine's shattering 400 bhp (294 kW), but rather on the outstanding muscle and torque quite exceptional in such a saloon. Within the discreetly styled body of the most powerful BMW available you will find the supreme driv-

The new high-tech V8 power unit displacing five litres and developing 400 bhp offers phenomenal torque for acceleration from 80-120 km/h, for example, in just 4.6 seconds. A new dimension in dynamic motoring only one word can describe: M Power.

The 6-speed manual gearbox featured as standard in the BMW M5 provides the perfect connection between the engine and the road beneath. With its short and crisp shift travel it is the perfect match for the car's ultra-powerful V8.

The three-spoke M multifunction steering wheel and the instrument dials with their matte chrome surrounds accentuate the sporting design of the car and give the cockpit of the BMW M5 a particularly dynamic touch.

The stylish interior, in turn, excels through the instrument panel finished in top-quality leather and wood trim of the highest standard.



ing machine with performance never seen before. So enjoy the thrill of the BMW M5 saloon combining spontaneous performance and unique superiority to create a world of its own never seen before.

BMW Individual

As personal as the palm of your hand.
Only one word can describe a BMW M Car
customised by BMW Individual: unique.



The creed of BMW Individual is both clear and straightforward: To refine very special cars to the highest standard of exclusivity. Creating a BMW M3 in the process which fits

like a tailor-made suit. BMW thus gives you the wonderful feeling of driving a car as unique and unmistakable as you are yourself. The twin-tone finish shown here in extra-soft

The colour of your BMW M3 is not just characteristic of your car. It is also characteristic of you and your personality. So tell us your favourite colour. Whether you prefer a particularly warm colour, a "loud" colour with a bright signal

effect, or paintwork in brilliant metallic. Whatever your choice, BMW Individual will also give you the colour of your dreams. And remember that the paintwork colours shown below in fiji green, atlantis metallic and velvet

blue are just a minute extract from the range available. So give your imagination free rein.



atlantis/black nappa with contrasting seams is just one example of our wide range of individual features. So contact your BMW partner for further offers from BMW Individual.

**To experience your limits, join us
in exceeding them.**

**The BMW M3 Club training programme
for the really ambitious M3 driver.**



All owners of a new BMW M3 who participate in BMW Driver Training can now join in our special BMW M3 Club training programme just as exclusive as the car itself. And in the process you will perfect

your skills where otherwise only professional racing drivers are allowed to go: on race tracks all over the world. Here you will gain an entirely new insight into your car, taking it all the way to the extreme.

And, not least, you will be able to verify and prove your driving skills in an atmosphere of excitement and tension. BMW Driver Training also offers all other BMW drivers the opportunity to enhance their driving

skill. Even the beginner can join in these training sessions, slowly but surely working his way up to his personal limit.

Using the accelerator and brake pedal the right way calls for genuine experience and finesse. So BMW Driver Training teaches you how to respond correctly with your BMW in critical situations - regardless of whether you are driving in winter or summer.



The BMW Technology Guide.

More about innovative BMW technology and its benefits.



Precise engine management thanks to Digital Motor Electronics.

What gives a BMW M3 power unit its phenomenal torque and performance.

Ensuring unique precision, **Digital Motor Electronics (DME)** controls, monitors and masterminds all major functions such as the car's ignition and fuel injection, as well as numerous ancillary functions. It is one of the main technologies for achieving outstanding performance on minimum fuel.

With **double-VANOS** valve timing the position of the intake and outlet camshafts is adjusted infinitely to the running conditions of the engine as a function of accelerator pedal position. The result is high torque at low speeds and high engine output at high speeds. With the volume of unburnt residual gas being reduced even further, the engine idles even more smoothly while specific control maps for the warm-up phase enhance the efficiency of the catalytic converter.



Maximum power on minimum fuel: the 3.2-litre BMW M3 power unit.

Benefitting from their large cross-section, the six **individual throttle butterflies** enhance the charge cycle, the engine responding dynamically to the accelerator.

Cylinder-specific knock control on the M3 incorporates three sensors to monitor the combustion process. As soon as the engine is about to "knock", these sensors inform the DME control system, which

immediately modifies the ignition angle and timing for each cylinder. As a result, the engine is able to run efficiently and without drawbacks on various levels of fuel quality.



Supreme engine power and the equally supreme suspension - the ingredients for dynamic motoring at its very best.

Hot-film air mass metering

doses the amount of fuel injected with maximum precision, regardless of any change in air density due to differences in temperature or elevation. Accordingly, the engine will respond immediately to the accelerator also in the mountains. The system itself excels through its fast reaction and reliable stability, all crucial components being integrated in one ceramic unit.

What makes a BMW M car so extremely safe.

BMW's restraint system

features a belt latch tensioner tightening the belt significantly in the event of a collision: The belt latch is pulled back within fractions of a second, the shoulder and lap belts are tightened simultaneously. The submarining protection, in turn, is a ramp-shaped unit at the front of the seat. Adding to the

effect of the belt latch tensioner, it makes sure that the driver and front passenger cannot dive beneath the lap belt in the event of an impact.

BMW's F.I.R.S.T. (Fully Integrated Road Safety Technology) safety concept coordinates all safety features to provide optimum, all-inclusive safety on the road: active and passive safety, protection of other road users, and protection of the vehicle itself.

Fitted as standard, **side airbags** for the driver and front passenger provide two vital functions: First, they protect the occupant from injuries in a collision from the side caused by parts penetrating the car. Second, they move the occupant's body away from the danger zone, keeping any side impact forces acting on your body to a minimum. Accordingly, the side airbag significantly reduces the risk of injury at chest level in a side-on collision.

The **high-performance brake system** is the result of design and construction features quite unusual in a production automobile. The brake system as such consists inter alia of compound discs with radial anti-friction bearings for the brake disc friction rings. Conventional brake discs, by contrast, are made of single-piece grey cast iron, friction heat generated while applying the brakes being able to accumulate in the friction ring and dissipating only gradually. The "floating" system, on the other hand, allows the brake disc friction ring to expand freely as a function of temperature. A further advantage of this multi-piece design is that it permits the use of different materials, meeting all the different requirements made of the brakes in an exemplary manner. The result is a significant increase

in service life, a substantial reduction of weight, much better driving comfort, and excellent stopping power.



Compound discs with radial anti-friction bearings reduce fading on the high-performance brake system to an absolute minimum.



The high-performance suspension of the BMW M3 guarantees superior safety even on extreme roads.

What makes a BMW M3 absolutely superior even in the fastest bends.

The **diffuser** is an air flow panel serving to increase down forces on the rear wheels through its exactly calculated apertures guiding the flow of air rushing by. On the BMW M3 coupé and M3 convertible the diffuser is integrated in the aerodynamically designed rear air dam.

The **limited-slip differential** allows the car to start off more smoothly on slippery surfaces and minimises the risk of the drive wheels spinning on one side, for example in a fast bend. Starting at a predefined difference in speed, a multiple-plate brake will temporarily convey up to 25 per cent of the power from the drive wheel currently spinning to the opposite wheel with better traction. The limited-slip differential ensures optimum traction also in exceptional situations.

The foundation for superior driving stability and motoring comfort: the central arm rear axle of the BMW M3.

The **central arm rear axle** is an elaborately designed multi-link configuration guided by two track control arms and one longitudinal arm pivoting on the central base in the body of the car. Precise interaction of these arms ensures that the wheels remain firmly on the road, regardless of spring motion. The result is excellent directional stability, the elastic steering mounts

even giving the axle a specific steering effect and providing additional stability in bends. The mounts also absorb even the slightest vibrations caused by bumps on the road and give the car excellent roll comfort and acoustic control.

Lateral acceleration generates forces trying to pull the car off the road in a fast bend. These forces increase as a function of speed and with the bend becoming tighter. The normal limit beyond which a car will swerve out of control is 0.8 g, ie, 0.8 times the acceleration of the earth, at the very most. With its outstanding suspension and equally unparalleled harmony





The BMW M3 is able to handle lateral acceleration of up to 1g.

of all components, the BMW M3 remains safe and stable, keeping the driver in control even at lateral acceleration of 1g.

How to shift gears in 0.4 seconds thanks to SMG.

Available as an option on the BMW M3 coupé and convertible, the **Sequential M Gearbox (SMG)** shifts gears along one single plane. In the process the electronic "brain" activates a magnetic valve allowing hydraulic fluid to flow into the clutch master cylinder, operating the clutch as it does so. Two further magnetic valves then operate two additional hydraulic cylinders, turning the gearshift shaft on the gearbox into the appropriate shift plane and inserting the appropriate gear. This "intelligent" engine/drive system communication is ensured by the MS S 50 engine control unit.



Shifting gears without the clutch thanks to BMW's Sequential M Gearbox (SMG).

Specifications.

Weight		M3 coupé	M3 convertible	M roadster
Unladen, EU ¹⁾	kg	1535	1635	1425
Max permissible	kg	1950	1980	1620
Permitted load ²⁾	kg	490	420	270
Permitted axle load, front/rear	kg	910/1120	920/1130	850/870

Engine³⁾		M3 coupé	M3 convertible	M roadster
Cylinders/valves		6/4	6/4	6/4
Capacity	cc	3201	3201	3201
Stroke/bore	mm	91.0/86.4	91.0/86.4	91.0/86.4
Max power	kW/bhp/rpm	236/321/7400	236/321/7400	236/321/7400
Max torque	Nm/lb-ft/rpm	350/258/3250	350/258/3250	350/258/3250
Compression ratio	:1	11.3	11.3	11.3

Performance⁴⁾		M3 coupé⁵⁾	M3 convertible⁶⁾	M roadster
Drag coefficient	C _d	0.32	0.36	0.42
Top speed	km/h	250 ⁷⁾	250 ⁸⁾	250 ⁹⁾
Acceleration 0-100 km/h	sec	5.5	5.6	5.4
Standing-start km	sec	24.7	25.0	24.4
Acceleration 80-120 km/h in 4th gear	sec	5.7	6.1	5.3
Final drive ratio	:1	3.23	3.23	3.15

Fuel consumption¹⁰⁾		M3 coupé¹¹⁾	M3 convertible¹²⁾	M roadster
Urban	ltr/100 km	16.9	17.0	16.6
Extra-urban	ltr/100 km	7.5	7.7	7.9
Composite	ltr/100 km	11.0	11.1	11.1
CO ₂ emissions	g/km	267	270	268
Tank capacity, approx	ltr	62	62	51

Wheels		M3 coupé	M3 convertible	M roadster
Tyre dimensions	front	225/45 ZR 17	225/45 ZR 17	225/45 ZR 17
	rear	245/40 ZR 17	245/40 ZR 17	245/40 ZR 17
Rim dimensions	front	7.5 J x 17	7.5 J x 17	7.5 J x 17
	rear	8.5 J x 17	8.5 J x 17	9 J x 17
Material		Light alloy	Light alloy	Light alloy

Electrical system		M3 coupé	M3 convertible	M roadster
Battery capacity	Ah	65	70	70
Alternator output	A/W	115/1610	115/1610	115/1610

¹⁾ The figure quoted includes a 90 per cent tank filling, 68 kg for the driver and 7 kg for luggage. Unladen weight applies to vehicles in standard trim. Special equipment may increase this figure.

²⁾ Engines with knock control are designed for RON 95 fuel. Use of RON 98 fuel reduces consumption under normal conditions and in-

creases engine power accordingly. On RON 91 fuel engine power decreases and fuel consumption increases.

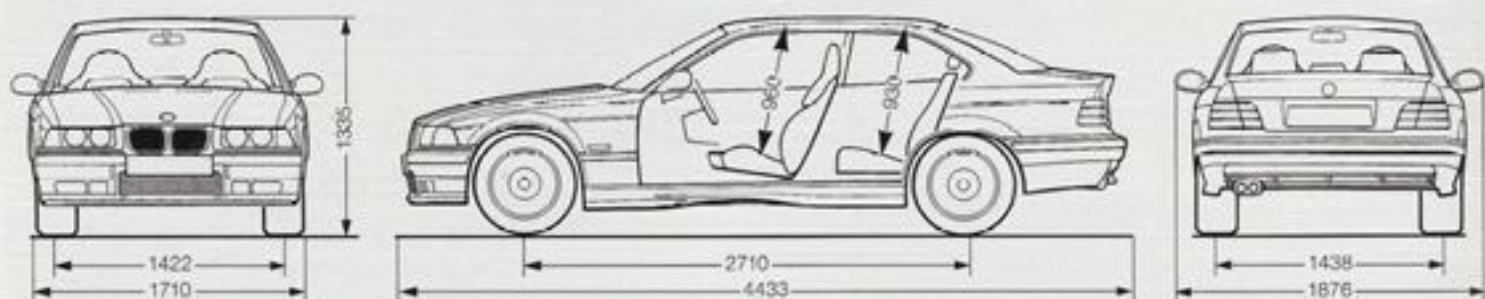
³⁾ All BMW M engines meet the D3 emission standard. Fuel consumption is determined in accordance with the ECE driving cycle. This cycle consists of approximately one-third urban traffic and two-thirds extra-

urban driving (related to the distance covered). CO₂ emissions are measured in addition to fuel consumption as such.

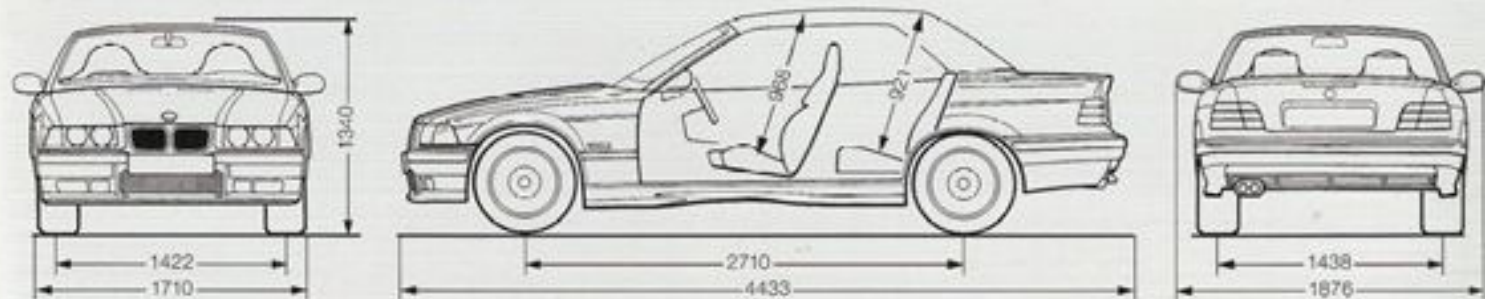
⁴⁾ Figures also apply to vehicles with the Sequential M Gearbox.

⁵⁾ Limited.

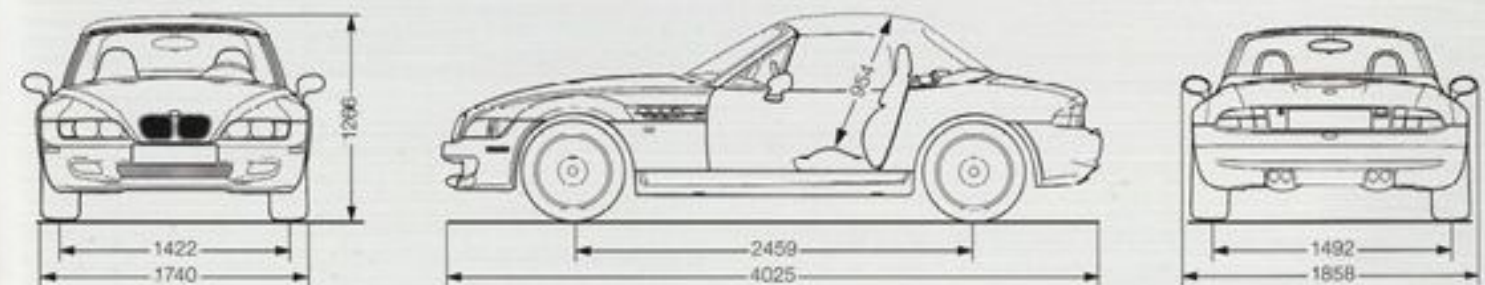
M3 coupé



M3 convertible



Mroadster



Please see the appropriate brochures for the specifications, features and colours of the BMW M5 and the BMW M coupé.

All dimensions in mm.

Standard equipment (extract).



Side airbags for the driver and front passenger are standard on the M3.



Aerodynamic, heated rear-view mirrors fitted as standard.

• = standard

Safety	M3 coupé	M3 convertible	M roadster
Aerodynamic package M with front air dam, specially contoured side-sills and rear air dam	•	•	
Aerodynamically contoured bumpers front and rear			•
Airbags for driver and front passenger, occupation detector on front passenger's seat	•	•	•
Anti-lock brake system (ABS)	•	•	•
Central locking with anti-theft security, electronic immobiliser, crash sensor			•
Central locking with remote control and anti-theft security, electronic immobiliser, crash sensor, fuel tank filler flap integrated in central locking, comfort closing of side windows at the front	•	•	
Disc brakes front and rear, inner-vented	•	•	•
Inertia-reel seat belts at the front with belt latch tensioners and belt retainers	•	•	•
Side airbags	•	•	
Side impact protectors, integrated	•	•	•

Engine	M3 coupé	M3 convertible	M roadster
6-cylinder in-line engine with 4-valve technology	•	•	•
Cylinder-specific knock control with 3 knock sensors	•	•	•
Digital Motor Electronics (DME) with hot-film air mass metering	•	•	•
Distributor system, solid-state	•	•	•
Double-chamber exhaust system: – twin tailpipes	•	•	
– Four tailpipes			•
Double-VANOS	•	•	•
Metal-based catalytic converters and double oxygen sensors, activated carbon filter, controlled tank purge	•	•	•
On-board diagnosis	•	•	•

Transmission/suspension	M3 coupé	M3 convertible	M roadster
5-speed manual gearbox with direct transmission ratio in fifth gear			•
6-speed manual gearbox	•	•	
Central arm rear axle with anti-squat, anti-dive and anti-roll bar	•	•	
Limited-slip differential with 25 per cent locking action	•	•	•
Semi-trailing arm rear axle with anti-squat, anti-dive, and anti-roll bar	•	•	•
Spring-strut front axle with anti-dive and anti-roll bar	•	•	•

The models illustrated in this brochure show the specifications for the **German** market. In part, they include optional equipment and accessories not fitted as standard. According to the specific requirements of other markets, alterations

in models, standard and optional equipment, as described in this brochure, may occur. For precise information on model features and the exact level of equipment, please contact your BMW partner.

Subject to change in design and equipment. Subject to error.
© BMW AG, Munich/Germany.

Not to be reproduced wholly or in part without written permission of BMW AG, Munich.



Aerodynamically styled front air dam with additional lip and foglamps.



Sporting analogue-face instruments clear and easy-to-read even at night thanks to modern illumination from behind.

Exterior features

	M3 coupé	M3 convertible	Mroadster
All-round rustproofing with hot galvanising, phosphate coating and cathodic dip bath, preservation of hollow cavities, underfloor protection	•	•	•
Foglamps in free-form technology	•	•	
Heat-insulating glass, green, with laminated windscreen	•	•	•
Light-alloy wheels: - M double-spoke II	•		
- M double-spoke, forged		•	
- M RoadStar			•
Mirrors: M exterior mirrors, aerodynamic, heated	•	•	•
Screenwasher nozzles and driver's door lock heated	•	•	•
Soft roof, electrohydraulic			•
Soft roof, fully automatic		•	
Wheel arches at the front with plastic inserts	•	•	•

Interior features

	M3 coupé	M3 convertible	Mroadster
Analogue-face instruments illuminated from behind	•	•	•
Armrests in the doors with integral closing handles	•	•	•
Glove compartment, lockable	•	•	•
Headrests at the front, adjustable for height and angle		•	
Headrests at the rear, adjustable for height	•		
Heating electronically controlled and independent of road speed, multi-stage radial blower	•	•	•
Interior rear-view mirror in safety design and with anti-dazzle function	•	•	•
Lashing belts in luggage compartment	•	•	
Lashing points in luggage compartment	•	•	
Leather steering wheel M with airbag	•	•	•
LIGHTS ON? warning	•	•	•
Luggage compartment with fabric lining all round	•	•	
Luggage net in front seat backrests	•	•	
Multi-Information Display with Check/Control (alpha-numerical display)	•	•	
No-smoker package	•	•	•
Outside temperature display	•	•	•

Standard equipment (continued).



BMW M3 coupé: M sports seats with adjustable headrest/shoulder support as standard.

• = standard

Interior features	M3 coupé	M3 convertible	M roadster
Rev counter, oil temperature gauge*, fuel gauge, coolant thermometer, LC display for mileage and trip counter	•	•	•
Seat adjustment, electric			•
Seats: – BMW sports seats for driver and front passenger		•	
– M sports seats for driver and front passenger, with headrest and shoulder support, adjustable for height	•		
– M sports seats with integrated headrest			•
– Seat heating, electric, for driver and front passenger		•	•
Service Interval Indicator	•	•	•
Storage compartments in the centre console, in the propeller shaft console and door panels, compartments lockable			•
Storage compartments in the centre console, propeller shaft console and door linings at the front, additional storage compartments on no-smoker cars	•	•	
Through-loading system	•		
Twin-tone horn	•	•	•
Tyre puncture kit: – M Mobility System in right-hand side of luggage compartment – Spare wheel beneath floor in luggage compartment	•	•	•
Upholstery: nappa leather all round		•	•
Vanity mirrors for driver and front passenger with slide cover	•	•	
Warning triangle and first-aid kit in a separate box on the right-hand side of the luggage compartment	•	•	•
Window lifts, electric, at the front, with fingertip control	•	•	
Window lifts, electric, with fingertip control			•

* manual gearbox models only.

All options are available fully installed ex works. To meet any further requests you may have, we offer a wide range of

BMW accessories developed by BMW and in BMW quality. Both these accessories as such and their installation are covered by our full works warranty.

For further information, please contact your BMW partner who will be glad to offer you helpful advice and special brochures on optional equipment and accessories.

Special equipment.



An option available on all BMW M3s: on-board computer.



Providing the temperature you desire at the touch of a button: automatic air conditioning with microfilter.

Selected options

	M3 coupé	M3 convertible	M roadster
Air conditioning			•
Alarm system	•	•	•
Armrest at the front	•	•	
Automatic air conditioning including microfilter	•	•	
Automatic air recirculation (AAR)	•	•	
Car telephone, GSM, with card reader at the front and hands free operation	•	•	
Cassette holder	•	•	•
CD changer (BMW 6 CD unit)	•	•	•
Cruise control	•	•	•
Footmats in velour	•	•	
Hardtop in body colour		•	
Hardtop, preparation for installation		•	
Headlight washer system	•	•	•
HiFi loudspeaker system	•	•	
HiFi loudspeaker system harman/kardon	•	•	•
Interior rear-view mirror with automatic anti-dazzle function	•	•	
Light-alloy wheels M, double-spoke, forged, 17-inch	•		
Metallic paintwork	•	•	•
Microfilter	•	•	
Model designation, dropped	•	•	•
On-board computer	•	•	
Park Distance Control (PDC) at the rear	•	•	
Radios, range of	•	•	•
Rear spoiler: M	•		
Rollbar			•
Rollover safety system		•	
Seat adjustment, electric, of driver's and front passenger's seats	•	•	
Seat heating for driver and front passenger	•		
Sequential M Gearbox (SMG)	•	•	
Ski-bag		•	
Sliding/vent roof, electric	•		
Sunblind for rear window, manual	•		
Upholstery: - Buffalo leather all round	•		
- Nappa leather with natural grain	•		
- Nappa leather with natural grain all round	•	•	
Vent windows at the rear, electric	•		
Wind deflector		•	•
Windscreen with green stripe at the top	•	•	•

Exterior and interior colours.

Paintwork colours		Interior colours	Fabric							
			Anthracite	Grey	Anthracite	Light grey	Modena natura	Mulberry	Hazelnut	
Non-metallic	300 Alpine white	M3 coupé	○		○					○
		M3 convertible								○ S
		M roadster								
	337 Dakar yellow	M3 coupé	●		●					
		M3 convertible				○ S		○ S		
		M roadster								
	314 Bright red	M3 coupé	○		○		○			
		M3 convertible				○ S	○ S			
		M roadster								
358 Evergreen	M roadster									
405 Imola red	M3 coupé	○		○		●			○	
	M3 convertible				○ S	○ S			○ S	
	M roadster									
Metallic ¹⁾	354 Titanium silver	M3 coupé	●	○	●	●				○
		M3 convertible				○ S				○ S
	309 Arctic silver	M roadster								
	386 Fern green	M3 coupé	○		○		○			●
		M3 convertible					○ S			○ S
	275 Boston green	M roadster								
	335 Estoril blue	M3 coupé	○	○	○	●				
		M3 convertible				● S				
		M roadster								
299 Techno violet	M3 coupé	○	○	○	○	○		●		
	M3 convertible				○ S	○ S		● M		
303 Cosmos black	M3 coupé	○	○	○	●	●		○	○	
	M3 convertible				○ S	● S		○ S / ○ M	○ S	
	M roadster									

- Colour combination particularly harmonious.
- Colour combination recommended.

Over and above the paintwork/roof/upholstery combinations shown, others are available on request.





¹⁾ Special equipment.

Symbols with letters specify the combination of paintwork/interior colours and roof colours. Example: Recommended colour combination

Roof colours.

Leather						
Magenta	Black	Dark grey	Kyalami dark orange	Estoril blue	Evergreen	Imola dark red
	○					
	○S					
				○B		○S
	●					
	○S					
	●S	○S				
○	○					
○S	○S					
	○S				●S	
	○					
○S	●S					
	○S	○S				●S
	●					
	○S					
	●S/R			○S/●B	○S	○S/R
●	○					
○S	○S					
	○S	○S				
○	○					
○S	○S					
	○S/○B			●S/●B		
○	○					
○S	○S					
○	○					
○S	○S					
	○S/R	○S/R	●S		○S	○S/R

for the M3 convertible with techno violet paintwork ● M: mulberry leather and roof in magenta.

Roof colours for M3 convertible und M roadster	
S	388 Black 
B	391 Dark blue 
G	392 Dark green ²⁾ 
M	798 Magenta ²⁾ 
R	390 Classic red ²⁾ 

²⁾ Roof colours for M3 convertible only.

²⁾ Roof colours for M roadster only.

Interior colours and materials.

		Models	M3 coupé	M3 coupé, M3 convertible		M3 coupé	M roadster
		Material	Fabric M-Cross/ Amanetta	Nappa leather ⁴	Nappa leather all round ²	Buffalo leather all round ²	Nappa leather
		Interior colours					
Anthracite		D8AT				M7AT	
Grey		D8TT					
Light grey				N5TT			
Modena nature				N5AY	L7AY		
Mulberry					L7MQ		
Hazelnut					L7HS		
Magma					L7AX		
Black				N5SW	L7SW		Q6SW
Dark grey							Q6TT
Kyalami dark orange							Q6KY
Estoril blue							Q6ES
Evergreen							Q6EV
Imola dark red							Q6IM

Experience shows that it is impossible to properly render the exact colour of the paintwork and upholstery on paper.

We therefore advise you to inspect the original colours at your BMW dealership. Your BMW partner will be glad to help.

⁴ Optional on the M3 coupé.

² Optional.

BMW makes you mobile also in financial terms.

Because BMW Financial Services offer you personal financial options tailored to your needs and developed by our finance engineers.



Many BMW drivers enjoy a special luxury today which you cannot even see from outside: The financial luxury offered by our tailor-made finance schemes, our interesting leasing options, and all kinds of attractive insurance policies. And the No 1 criterion in all cases is to make the overall package just perfect. Precisely this is where BMW's financial experts come in, lending you more than just a helping hand. Because together we will develop a financing concept tailored exactly to your requirements. With all the services you need from one source. From a sales advisor also trained as an expert in financial matters. From an expert who offers you both individual and comprehensive treatment. So contact your BMW partner for information on BMW Financial Services and the many amenities we have to offer.

The start of a good relationship.

At BMW we see service as a true partnership. A partnership with only one objective: to serve you.



The free BMW Service Card keeps you on the move even if you should get stuck somewhere.*



The Service Interval Indicator in your BMW informs you of the next inspection or oil change. Trained specialists and BMW-specific diagnostic equipment at your BMW dealership give you the skills you rightly expect of BMW. And if, in an exceptional case, there is no BMW workshop nearby, just dial your local BMW number toll-free for our round-the-clock standby service. You will find this number with your car documents and inside the luggage compartment lid of your BMW.

Offering a wide range of services such as salvaging and towing your vehicle, hotel accommodation and a rental car whenever you need it, the free BMW Service Card* takes care of all your needs in virtually every situation.

* The BMW Service Card is not available in all markets. For further information contact your BMW partner.



Take the driver's seat.

Words and pictures are often not enough. Which is why we would like to offer you a first-hand encounter with the BMW M models. In a talk with your BMW partner. Or on a test drive. For further information see our Internet address <http://www.bmw.com>



The Ultimate Driving Machine